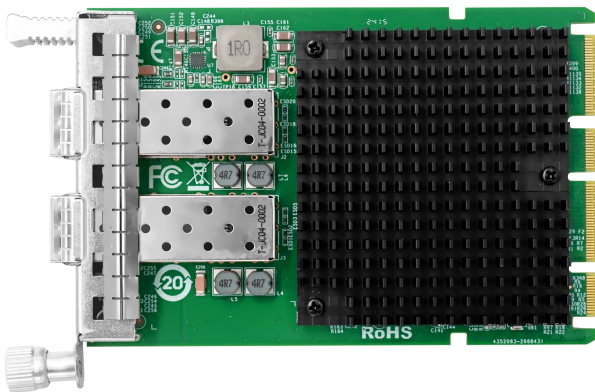


# LRES3039PF-OCP

## OCP3.0 Dual-port 10G Ethernet Network Adapter V2

### (Intel X710-BM2 Based)



#### Key Features:

- Support NCSI sideband management;
- Support FRU read and write;
- Equipped with 2 10G SFP+ interfaces, supporting 1G/10Gbps data transfer rate;
- Support device hot swapping (requires motherboard support);
- Support SMBus temperature monitoring;

#### Overview

LRES3039PF-OCP is an OCP3.0 Dual-port 10G Ethernet Network Adapter independently developed by Linkreal Co., Ltd. based on the Intel X710 control solution. This product is based on the Intel X710 control scheme, adopts the OCP 3.0 SFF standard, and has a dual port 10G fiber optic Ethernet interface. It is designed specifically for next-generation data centers and can provide up to 10G data transfer rates to meet the growing demand for server and network virtualization. Whether in flexible LAN or SAN networks, LRES3039PF-OCP can provide stable and reliable performance. This adapter is mainly used for servers and high-end devices, not only to meet current and future long-term server needs, but also to adapt to the current network environment. In addition, LRES3039PF-OCP also has NCSI and Scan Chain functions, bringing more convenience to users. Meanwhile, its excellent ESD anti-static protection capability also ensures the stable operation of the equipment in complex network environments.

## Specifications

Model	LRES3039PF-OCP	
Controller	Intel X710-BM2	
Cable medium	optical fiber	
Fiber Type	10GBASE-SR、10GBASE-LR、10GBASE-Cu 1GBASE-SR、1GBASE-LR、1GBASE-Cu	
Bracket Height	SFF	
Firmware version	9.50	
Min Power(w)	2.52W	
Max Power(w)	5.544W	
Connector	2*10G SFP+	
Bus Type	PCIe3.0 (8.0GT/s) x8	
ESD(Contact discharge)	±6KV	
Data rate per port	1G/10Gbps	
Power Supply	OCP	
Protocol Support	IEEE 802.1Qbg, 802.1az, 802.1Qbb	
PXE/UEFI	Yes	
NCSI	Yes	
WoL	Yes	
SR-IOV	Yes	
1588 PTP	Yes	
ScanChain	Yes	
FRU read and write	Yes	
SMBus Monitoring Temperature	Yes	
Jumbo Frames	9.7KB	
System Support	<ul style="list-style-type: none"> <li>* Windows 8.1/10/11</li> <li>* Windows Server 2008/2012</li> <li>* Windows Server 2016/2019</li> <li>* Windows Server 2022</li> <li>* RHEL/Centos7.6/7.9/8.2/8.3/9.0</li> <li>* Deepin 15.11/20/20.6</li> <li>* Ubuntu 16.04.3/18.04.5</li> <li>* Ubuntu 20.04.1/22.04/24.04</li> <li>* SUSE 12.5/15 SP4</li> <li>* FreeBSD 12.2/13.2</li> <li>* NewStartOS V6.6.6/V4.5.2</li> <li>* Galaxy Unicorn v10</li> <li>* NeoKylin 7.6</li> <li>* Openkylin 2.0</li> </ul>	<ul style="list-style-type: none"> <li>* Zhongke Fangde desktop operating system 4.0</li> <li>* Zhongke Fangde server operating system</li> <li>* UOS 20</li> <li>* YMOS</li> <li>* iKuai router</li> <li>* Rocky 9.4</li> <li>* openEuler 24.03</li> <li>* Debian-12.5.0</li> <li>* FusionOS-22.0.6/-23.0.6</li> <li>* Openkylin 2.0</li> <li>* VMware ESXi 6.7/7.0</li> </ul>

## LED Indicators

1Gbps	Connection Status	(LINK)Orange Link+(ACT) Green Link
	Transfer status	(LINK)Orange Link+(ACT) Green Blink
10Gbps	Connection Status	(LINK)Green Link+(ACT) Green Link
	Transfer status	(LINK)Green Link+(ACT) Green Blink

## Environment Features

Operating Temperature	0℃ to 55℃ (-32 ℉ to 131 ℉)
Storage Temperature	-40 ℃ to 70 ℃ (-40 ℉ to 158 ℉)
Storage Humidity	Maximum: 90% non-condensing relative humidity at 35 ℃
Certification	FCC, CE, RoHS

## Physical properties

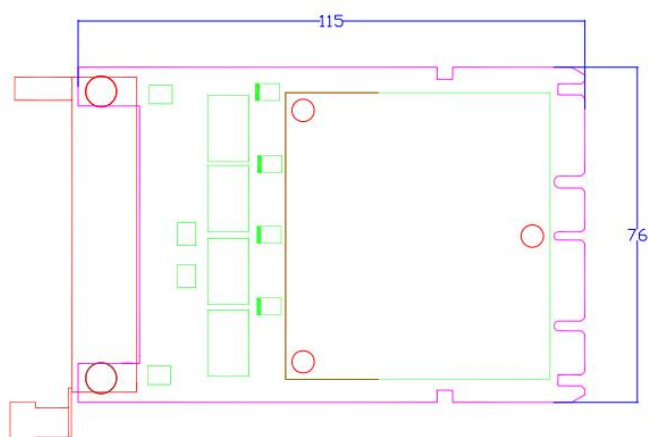
PCB size(unit:mm)	115*76*1.6
Package size (unit: mm)	179*150*30

## Packing List

Bracket	Default SFF baffle installation
Internet Network Adapter	*1
Product Warranty Card	*1
Packaging	Carton + Anti-static bag

PS: The depictions provided of our products are not to scale and are intended for illustrative purposes only.

## Dimensions



**Linkreal Co., Ltd.**

14F T10 Bldg., Sino-Ocean New World, Longcheng Street, Longgang District Shenzhen China 518172

☎ (+86)755-84507909  
✉ [service@lr-link.com](mailto:service@lr-link.com)  
🌐 [www.lr-link.com](http://www.lr-link.com)

